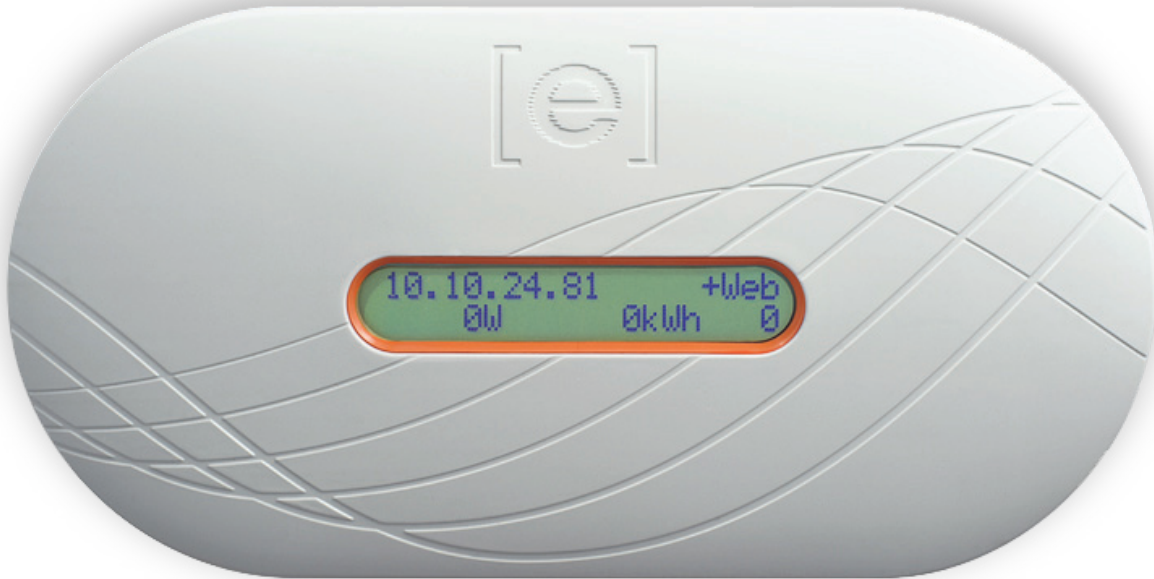


# Envoy Communications Gateway™



The Enphase **Envoy® Communications Gateway** is the networking hub for the Enphase Microinverter System.

System owners can easily check the status of their solar system using the Envoy's LCD display or they can get more detailed information through Enlighten®, Enphase's web-based monitoring and analysis software, included with purchase of Envoy.

## SMART

- Includes web-based monitoring & control
- Integrates with smart energy devices

## SIMPLE

- Plug & play installation
- Automatic upgrades & diagnostics

## RELIABLE

- 24/7 monitoring & analysis
- Advanced data management & storage

---

### INTERFACE

Power Line Communications	Enphase proprietary
Local Area Network (LAN)	10/100 auto-sensing, auto-negotiating

---

### POWER REQUIREMENTS

AC supply	120 VAC, 60 Hz
Power consumption	2.5 watts typical, 7 watts maximum

---

### CAPACITY

Number of microinverters polled	Recommended up to 500
---------------------------------	-----------------------

For commercial installations, multiple Envoy devices are used in combination with Line Communications Filters (LCF) to separate networking domains across the site.

---

### MECHANICAL DATA

Dimensions (WxHxD)	222.5 mm x 112 mm x 43.2 mm (8.8" x 4.4" x 1.7")
Weight	340 g (12 oz.)
Ambient temperature range	-40°C to +65°C (-40° to 149°F)
Cooling	Natural convection—no fans
Enclosure environmental rating	Indoor NEMA 1

---

### FEATURES

Standard warranty term	One year
Compliance	UL 60950-1, EN 60950-1 FCC Part 15 Class B