



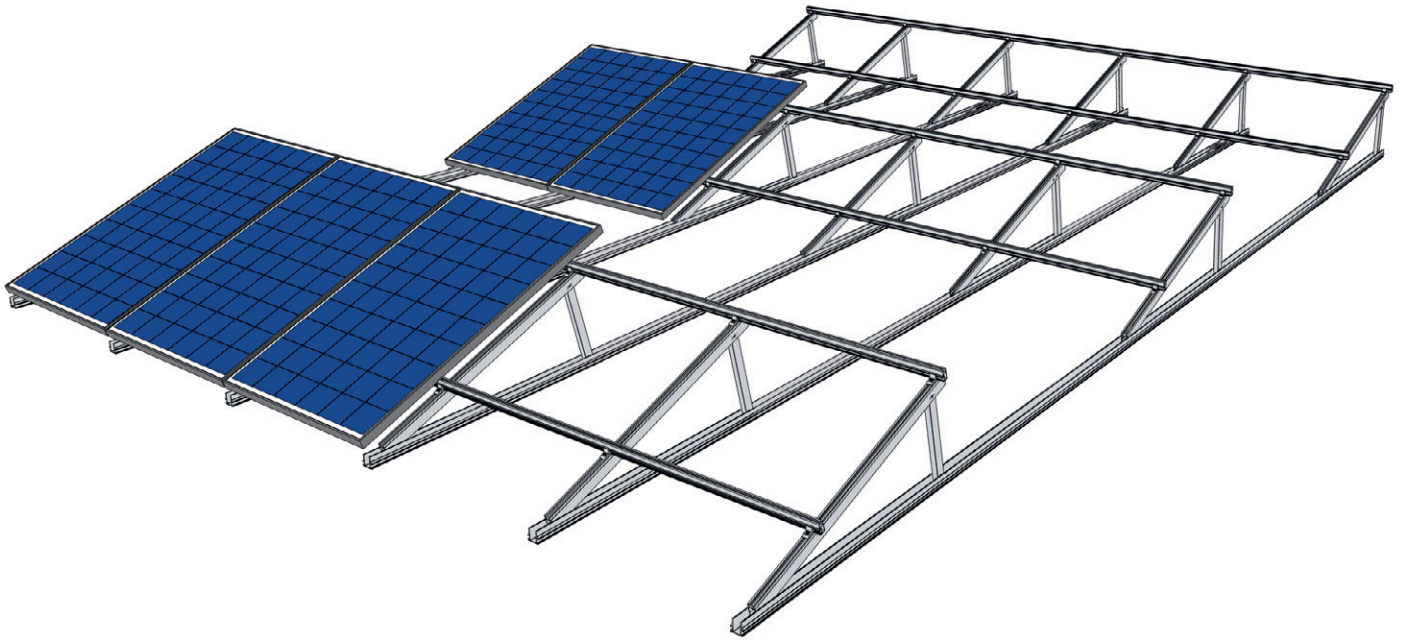
For the perfect tilt angle IBC TopFix 200

Delta-support

The mounting system of the IBC TopFix 200 series can be used on any pitched roof or flat roof, meets the highest quality standards, and saves time in installation. The tilted Delta-support out the product range for the IBC TopFix 200 pre-assembled. The IBC TopFix 200 Delta-support is pre-assembled for fast and easy set-up and attachment to the roof. The support can be mounted in tilt angles from 10 to 45° in 5° steps. Hence, a perfect orientation of the solar modules is ensured.

Highlights:

- Optimizes the module array alignment on pitched and flat roofs
- Fast installation with pre-assembled brackets
- Various tilt angles possible
- Aluminum and stainless steel components for long service life
- Low system costs
- Static documentation for system components based on EUROCODE
- 10 year product warranty*



- Fast and easy mounting
- Fastening on roof possible with riveting technology, ballasting, roof hooks or hanger bolts
- Horizontal and vertically mounting of modules possible

2014-03-25

Presented by:

* The complete warranty conditions are binding as per your relevant version. Corresponding copy can be requested from your IBC SOLAR partner. Subject to modifications that represent progress.